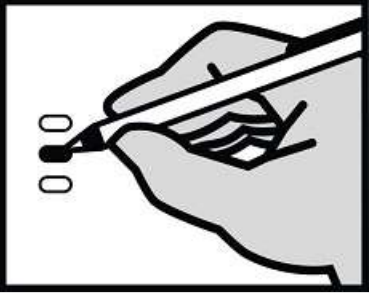


Instructions

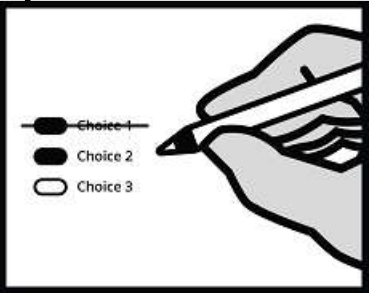
How to vote



Use a dark blue or black ink pen to completely fill in the oval to the left of your choice. Do not use felt tip markers.

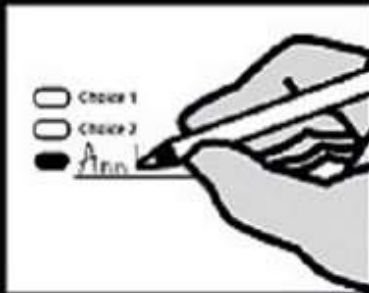
Vote for one in each race. If you vote for more than one, no votes will be counted for that race.

If you make a mistake



Draw a line through the entire measure response or candidate's name. Then you may make another choice.

Optional Write-in



To vote for a candidate not listed for that race, fill in the oval to the left of blank space and print the name of the declared write-in to the right of the oval.

Who donates to campaigns?

View information on financial contributors for presidential candidates:

**Federal Election Commission**  
www.fec.gov  
Toll Free (800) 424-9530

View contributors for state and local campaigns:

**Public Disclosure Commission**  
www.pdc.wa.gov  
Toll Free (800) 601-2828

Referendum Measure

Referendum Measure No. 90

The legislature passed Engrossed Substitute Senate Bill 5395 concerning comprehensive sexual health education. This bill would require school districts to adopt or develop, consistent with state standards, comprehensive age-appropriate sexual health education, as defined, for all students, and excuse students if their parents request.

Should this bill be:

☐ Approved

☐ Rejected

Advisory Votes

Advisory Vote No. 32  
Engrossed Substitute Senate Bill 5323

The legislature imposed, without a vote of the people, a retail sales tax on pass-through charges retail establishments collect for specified carryout bags, costing \$32,000,000 in its first ten years, for government spending.

This tax increase should be:

☐ Repealed

☐ Maintained

Advisory Vote No. 33  
Substitute Senate Bill 5628

The legislature imposed, without a vote of the people, a tax on heavy equipment rentals to consumers by heavy equipment rental property dealers, costing \$103,000,000 in its first ten years, for government spending.

This tax increase should be:

☐ Repealed

☐ Maintained

Advisory Vote No. 34  
Engrossed Substitute Senate Bill 6492

The legislature increased, without a vote of the people, the business and occupation tax rate for certain businesses, while reducing certain surcharges, costing \$843,000,000 in its first ten years, for government spending.

This tax increase should be:

☐ Repealed

☐ Maintained

Advisory Vote No. 35  
Engrossed Senate Bill 6690

The legislature increased, without a vote of the people, the business and occupation tax on manufacturers of commercial airplanes, including components or tooling, costing \$1,024,000,000 in its first ten years, for government spending.

This tax increase should be:

☐ Repealed

☐ Maintained

Proposed Constitutional Amendment

Engrossed Senate Joint Resolution No. 8212

The legislature has proposed a constitutional amendment on investment of public funds. This amendment would allow public money held in a fund for long-term care services and supports to be invested by governments as authorized by state law, including investments in private stocks.

Should this constitutional amendment be:

☐ Approved

☐ Rejected

Federal: Partisan Offices

President / Vice President of the United States

- ☐ **Joseph R. Biden / Kamala D. Harris**  
Democratic Party Nominees
- ☐ **Donald J. Trump / Michael R. Pence**  
Republican Party Nominees
- ☐ **Jo Jorgensen / Jeremy "Spike" Cohen**  
Libertarian Party Nominees
- ☐ **Howie Hawkins / Angela Walker**  
Green Party Nominees
- ☐ **Gloria La Riva / Sunil Freeman**  
Socialism and Liberation Party Nominees
- ☐ **Alyson Kennedy / Malcolm M. Jarrett**  
Socialist Workers Party Nominees
- ☐

**READ: "Each candidate for President and Vice-President is the official nominee of a political party. For other partisan offices, each candidate may state a political party that he or she prefers. A candidate's preference does not imply that the candidate is nominated or endorsed by the party, or that the party approves of or associates with that candidate."**

U.S. Representative  
Congressional District 3

- ☐ **Jaime Herrera Beutler**  
(Prefers Republican Party)
- ☐ **Carolyn Long**  
(Prefers Democratic Party)
- ☐

State: Partisan Offices

Governor

- ☐ **Jay Inslee**  
(Prefers Democratic Party)
- ☐ **Loren Culp**  
(Prefers Republican Party)
- ☐

Lt. Governor

- ☐ **Denny Heck**  
(Prefers Democratic Party)
- ☐ **Marko Liias**  
(Prefers Democratic Party)
- ☐

Secretary of State

- ☐ **Kim Wyman**  
(Prefers Republican Party)
- ☐ **Gael Tarleton**  
(Prefers Democratic Party)
- ☐

State Treasurer

- ☐ **Mike Pellicciotti**  
(Prefers Democratic Party)
- ☐ **Duane A. Davidson**  
(Prefers Republican Party)
- ☐

State Auditor

- ☐ **Pat (Patrice) McCarthy**  
(Prefers Democratic Party)
- ☐ **Chris Leyba**  
(Prefers Republican Party)
- ☐

Attorney General

- ☐ **Bob Ferguson**  
(Prefers Democratic Party)
- ☐ **Matt Larkin**  
(Prefers Republican Party)
- ☐

Commissioner of Public Lands

- ☐ **Hilary Franz**  
(Prefers Democratic Party)
- ☐ **Sue Kuehl Pederson**  
(Prefers Republican Party)
- ☐

State Non-Partisan

Superintendent of Public Instruction

- ☐ **Chris Reykdal**
- ☐ **Maia Espinoza**
- ☐

State: Partisan Office

Insurance Commissioner

- ☐ **Mike Kreidler**  
(Prefers Democratic Party)
- ☐ **Chirayu Avinash Patel**  
(Prefers Republican Party)
- ☐

State Senator  
Legislative District 19

- ☐ **Dean Takko**  
(Prefers Democratic Party)
- ☐ **Jeff Wilson**  
(Prefers Republican Party)
- ☐

State Representative Position 1  
Legislative District 19

- ☐ **Jim Walsh**  
(Prefers Republican Party)
- ☐ **Marianna Everson**  
(Prefers Democratic Party)
- ☐

State Representative Position 2  
Legislative District 19

- ☐ **Joel McEntire**  
(Prefers Republican Party)
- ☐ **Brian E. Blake**  
(Prefers Democratic Party)
- ☐

County: Partisan Offices

County Commissioner  
District No. 1

- ☐ **Lisa Olsen**  
(Prefers Republican Party)
- ☐ **Darrell Moudry**  
(Prefers Democratic Party)
- ☐

County Commissioner  
District No. 2

- ☐ **Frank Wolfe**  
(Prefers Democratic Party)
- ☐ **Dan Driscoll**  
(Prefers Libertarian Party)
- ☐

Judicial: Non Partisan

Supreme Court Justice Position 3  
6 year Short and Full Term

- ☐ **Dave Larson**
- ☐ **Raquel Montoya-Lewis**
- ☐

Supreme Court Justice Position 4

- ☐ **Charles W. Johnson**
- ☐

Supreme Court Justice Position 6  
Unexpired 2 year term

- ☐ **Richard S. Serns**
- ☐ **G. Helen Whitener**
- ☐

Supreme Court Justice Position 7

- ☐ **Debra L. Stephens**
- ☐

Pacific, Wahkiakum Superior Court  
Judge Position 1

- ☐ **Donald J. Richter**
- ☐

Public Utility District  
Nonpartisan

Public Utility District 2  
Commissioner District No. 1

- ☐ **Michael 'Mike' Swanson**
- ☐ **Pam Hickey**
- ☐

Local Issues

Proposition No. 1  
Ambulance and Emergency Medical  
Services Funding

The North Pacific Emergency Medical Services District No. 1 has passed Resolution 2020-721 concerning the collection of an excess levy of forty six cents per thousand dollars of assessed value (\$.46/1000av), replacing the expiring 2020 levy, estimated to collect not more than four hundred sixty thousand dollars (\$460,000), against all property in Pacific County, except for that property which is within the boundaries of Ocean Beach, Ocosta, or North River School Districts and collected in 2021 to subsidize Ambulance and emergency medical services within the North Pacific County Emergency Medical Services District #1 service area. Should this be approved:

- ☐ Yes
- ☐ No

Vote Both Sides